

Inside Outside

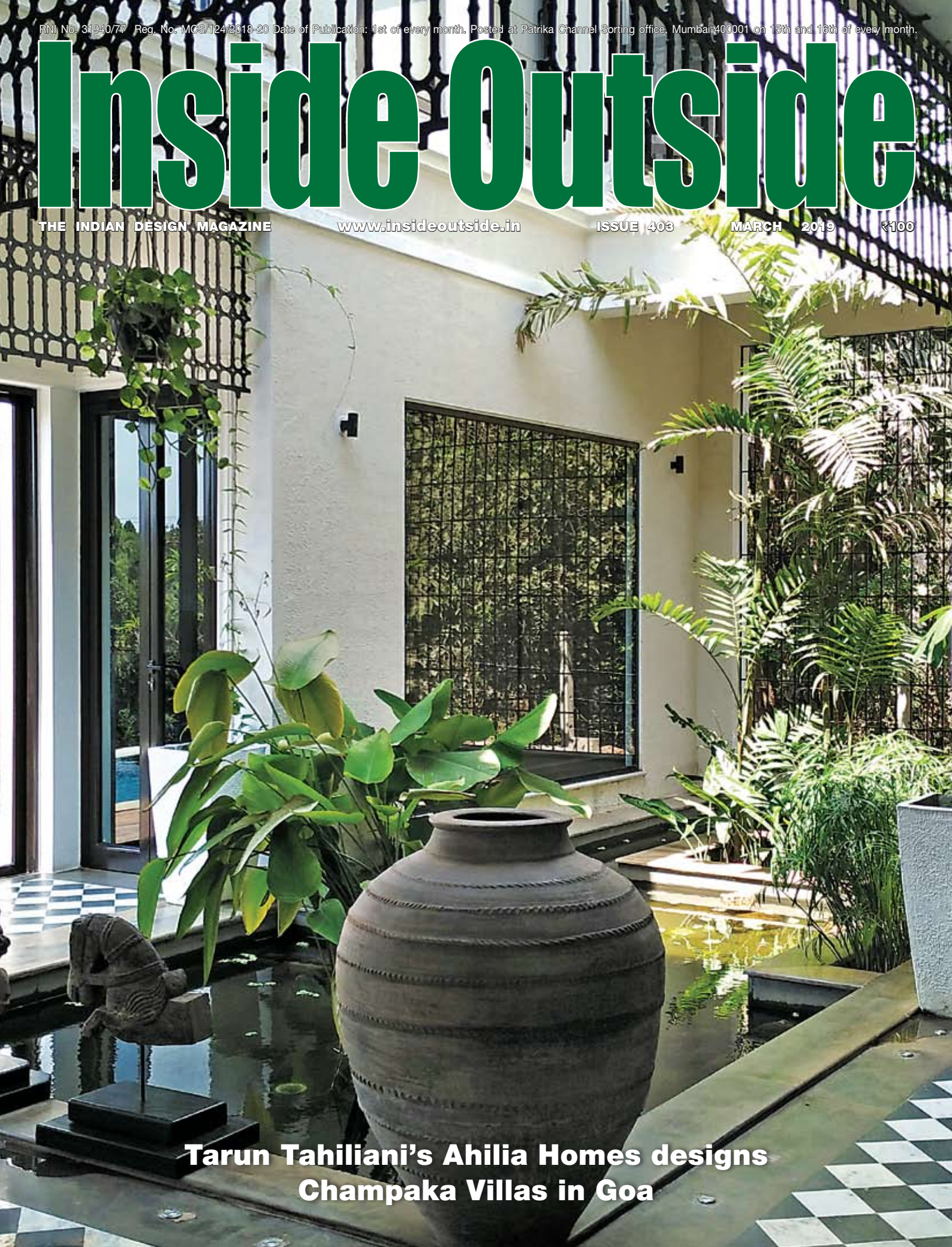
THE INDIAN DESIGN MAGAZINE

www.insideoutside.in

ISSUE 403

MARCH 2019

₹100



**Tarun Tahiliani's Ahilia Homes designs
Champaka Villas in Goa**



Ar Sanjeev Joshi



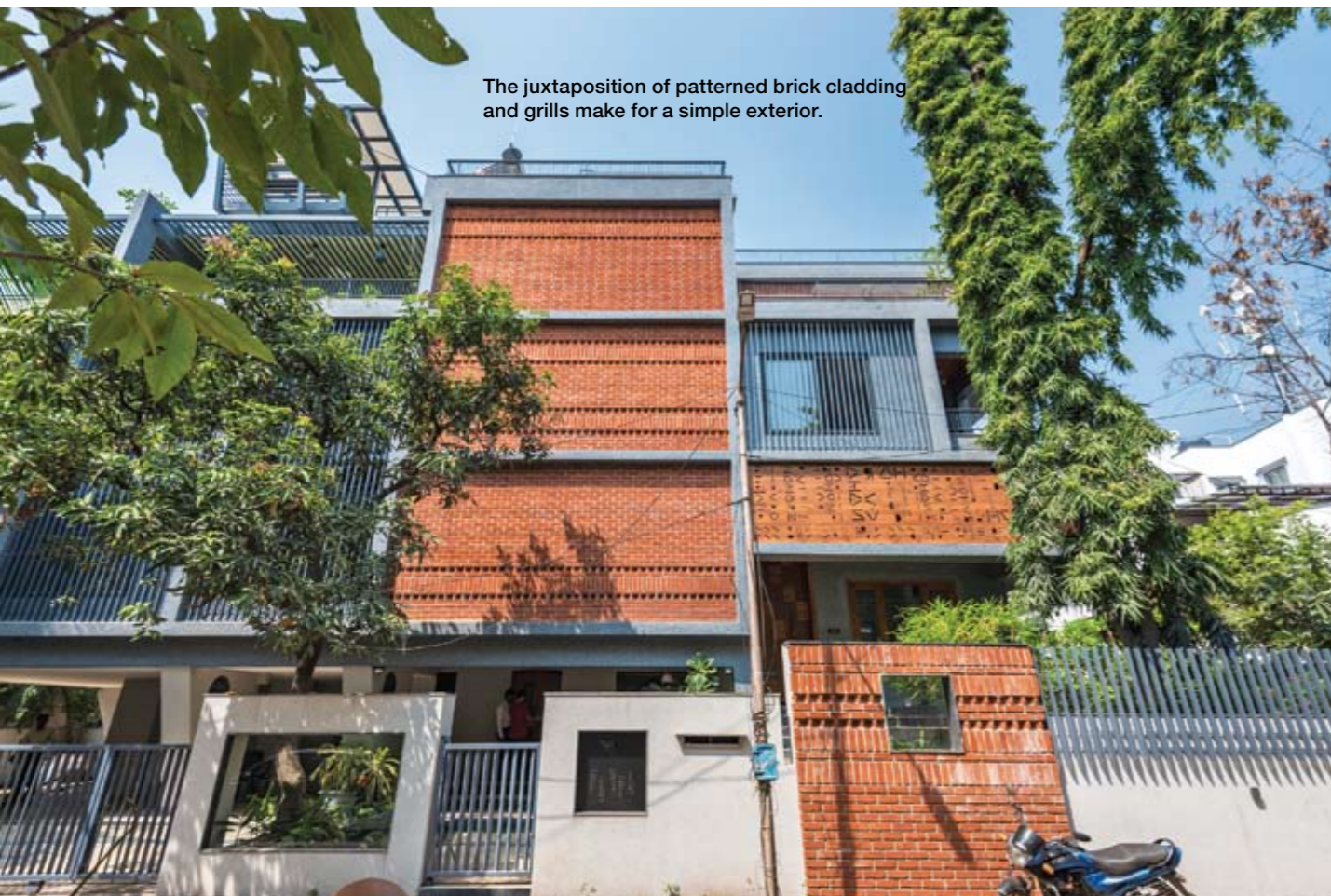
Ar Mita Joshi

The Garden House

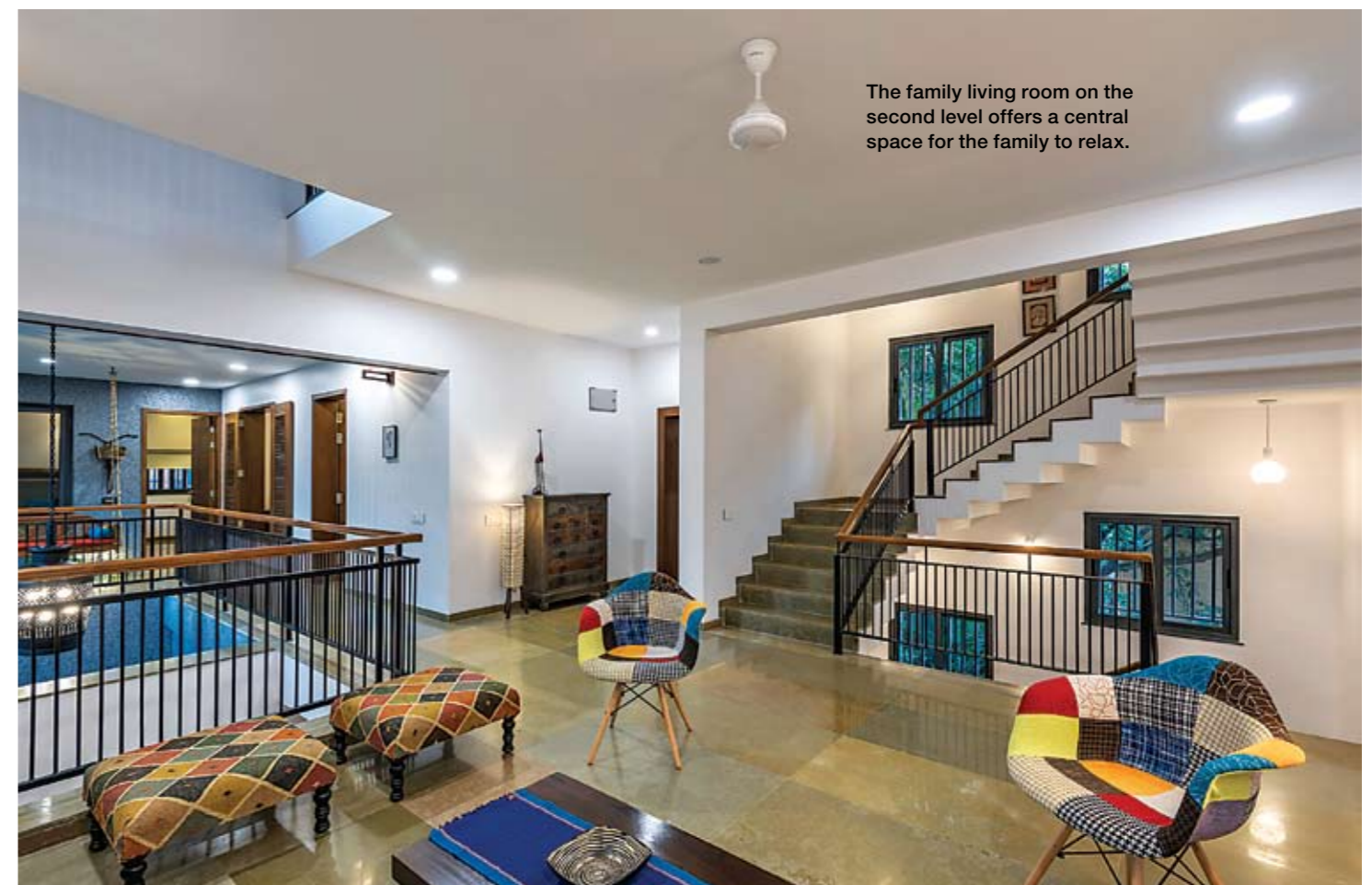
Pune-based architects and interior designers Mita and Sanjeev Joshi design the architecture and interiors of a bungalow with the aim of giving it a connect with the outdoors.

PHOTOGRAPHS: ATUL KANETKAR

A multiple level residence was designed to fit into the long and narrow plot. A façade of straight lines, limited colour and materials palette, cut-outs and blank walls, flush walls and projecting blocks, open and covered terraces make a statement in strength and simplicity.

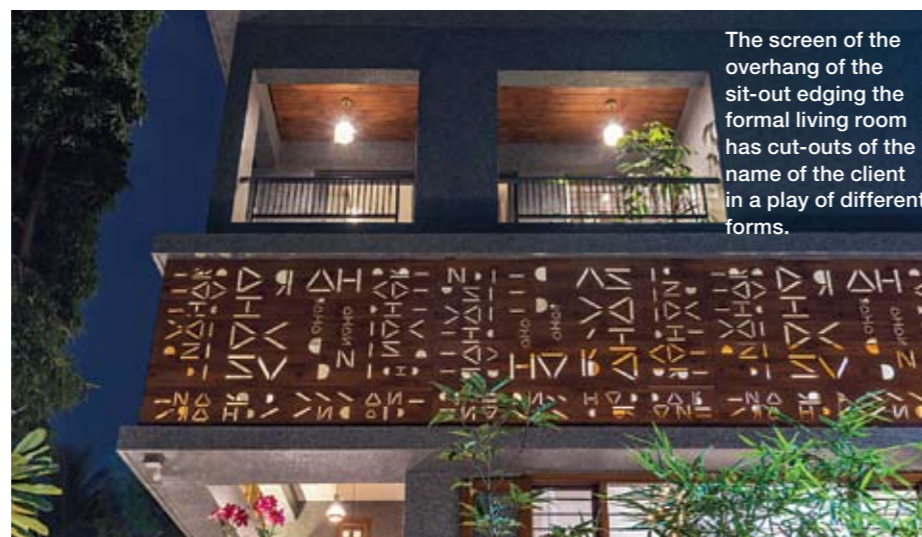


The juxtaposition of patterned brick cladding and grills make for a simple exterior.



The family living room on the second level offers a central space for the family to relax.

The client, Sandeep Naharhad, moved to Pune from a rural area in southern Maharashtra three decades ago. He always longed for a home that would remind him of his childhood house located by a farm. He was keen on building a bungalow that seemed one with nature, one that had plenty of natural light, ventilation and views of greenery, and one in which the weather could be enjoyed throughout the year without recourse to air-conditioning. He also wanted a home with ample spaces for immediate and extended family, personal and shared spaces', say Pune-based architects and interior designers Mita and Sanjeev Joshi of



The screen of the overhang of the sit-out edging the formal living room has cut-outs of the name of the client in a play of different forms.

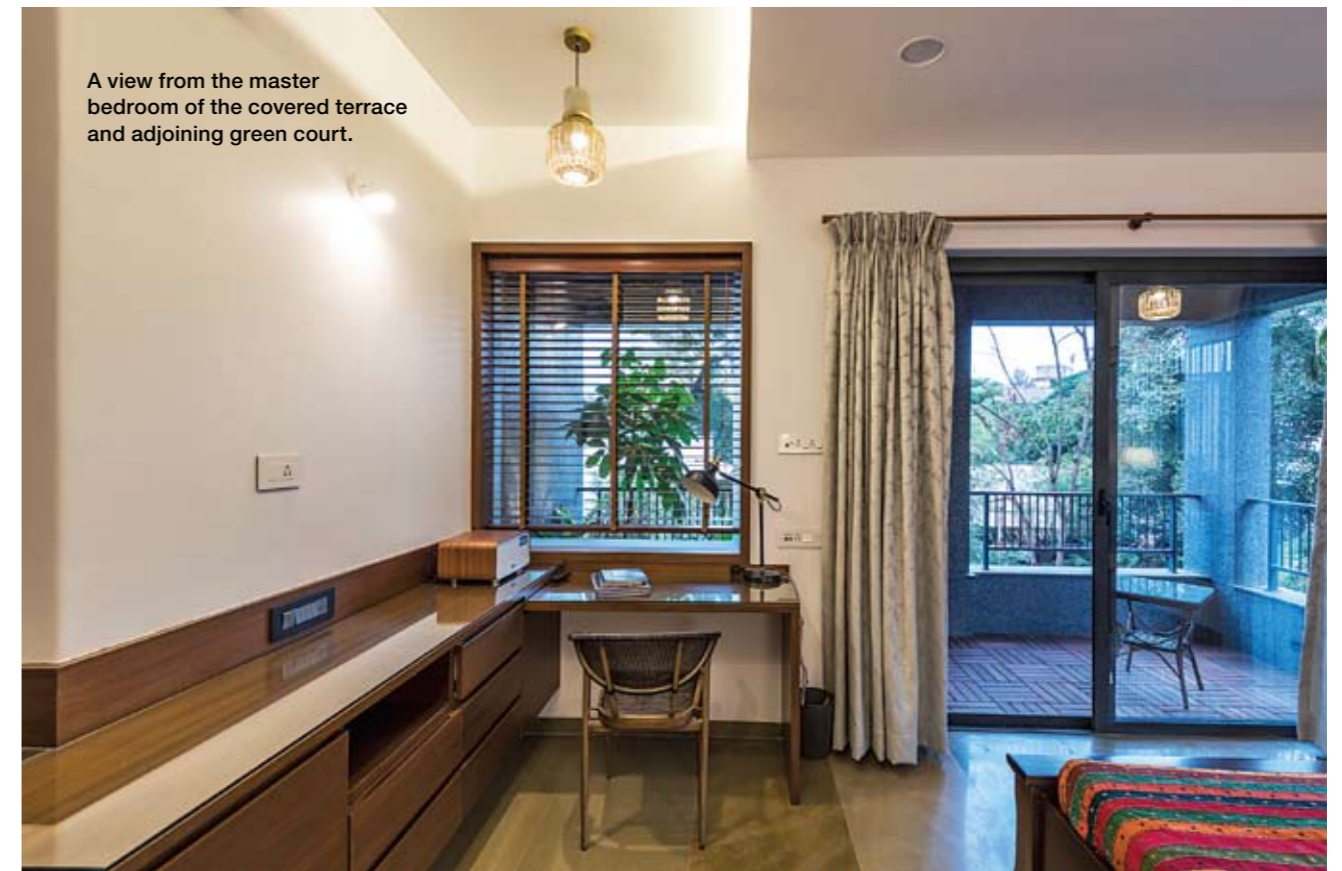
the bungalow they recently completed for the Nahar family that has informally taken on the name Garden House after the refreshing splashes of greenery within and outside it.

The acquisition of two small plots set in a corner site in Karve Nagar, Pune, offered Nahar the opportunity to have his dream home come true. He met with the architect couple

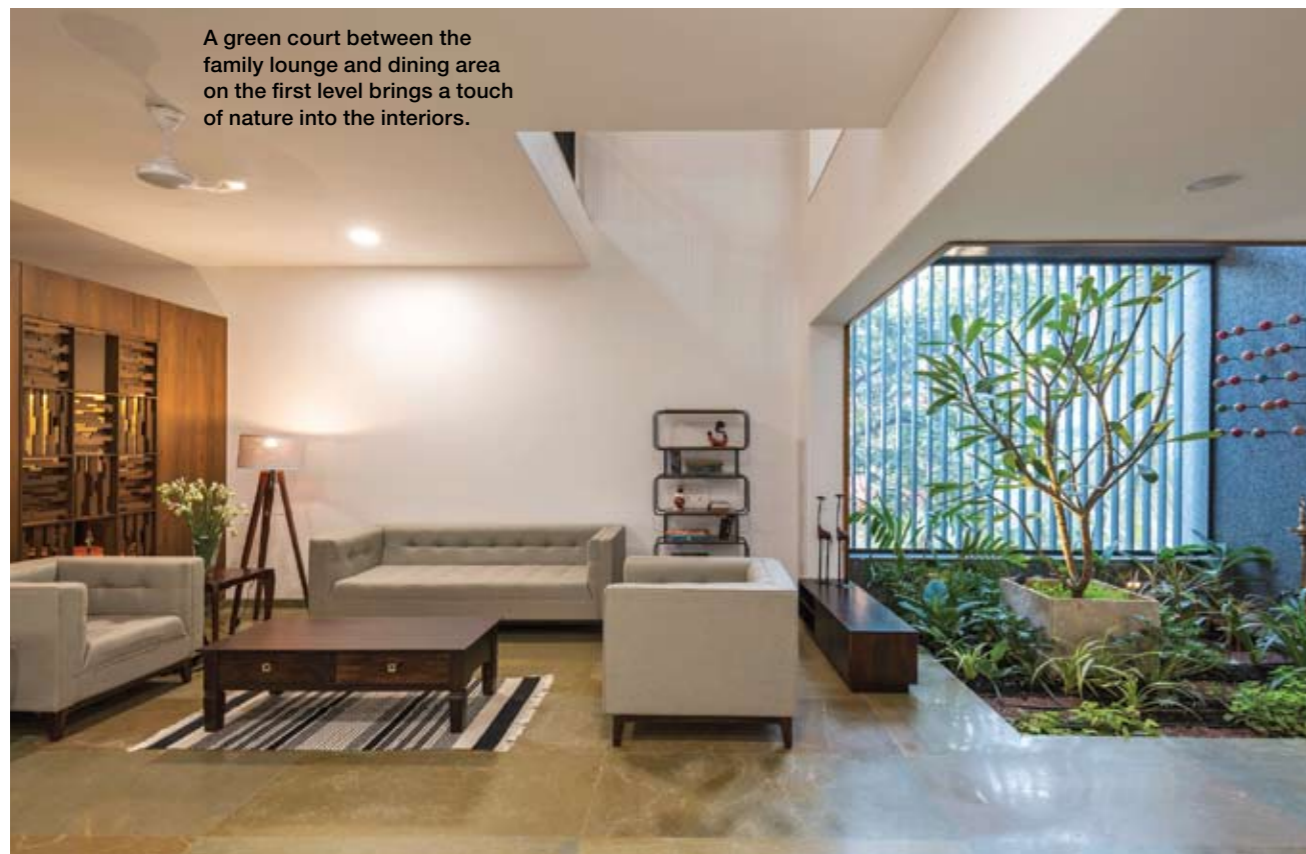




A bench set in the cut-out to the green court edging the formal living room offers a spot to enjoy the garden-like space.



A view from the master bedroom of the covered terrace and adjoining green court.



A green court between the family lounge and dining area on the first level brings a touch of nature into the interiors.

and shared his requirements for a residence for his parents and his family as well as his personal thoughts regarding its design. And working within the parameters of the site and giving form to the client's aspiration, the architects designed a bungalow that integrated several concepts and elements

Multilevel Structure

Given the long and narrow dimensions ((total plot size 47x100 feet) of the plot with the longer sides facing east and west, the architects planned a 6000 sq ft residence of multiple levels that would neatly demarcate different functional areas as well as personal and common areas; take advantage of the east light and cut out the west light by placing more of the service areas on that side; and enjoy good

cross-ventilation by channeling the south-west breeze through the home by way of openings on that side.

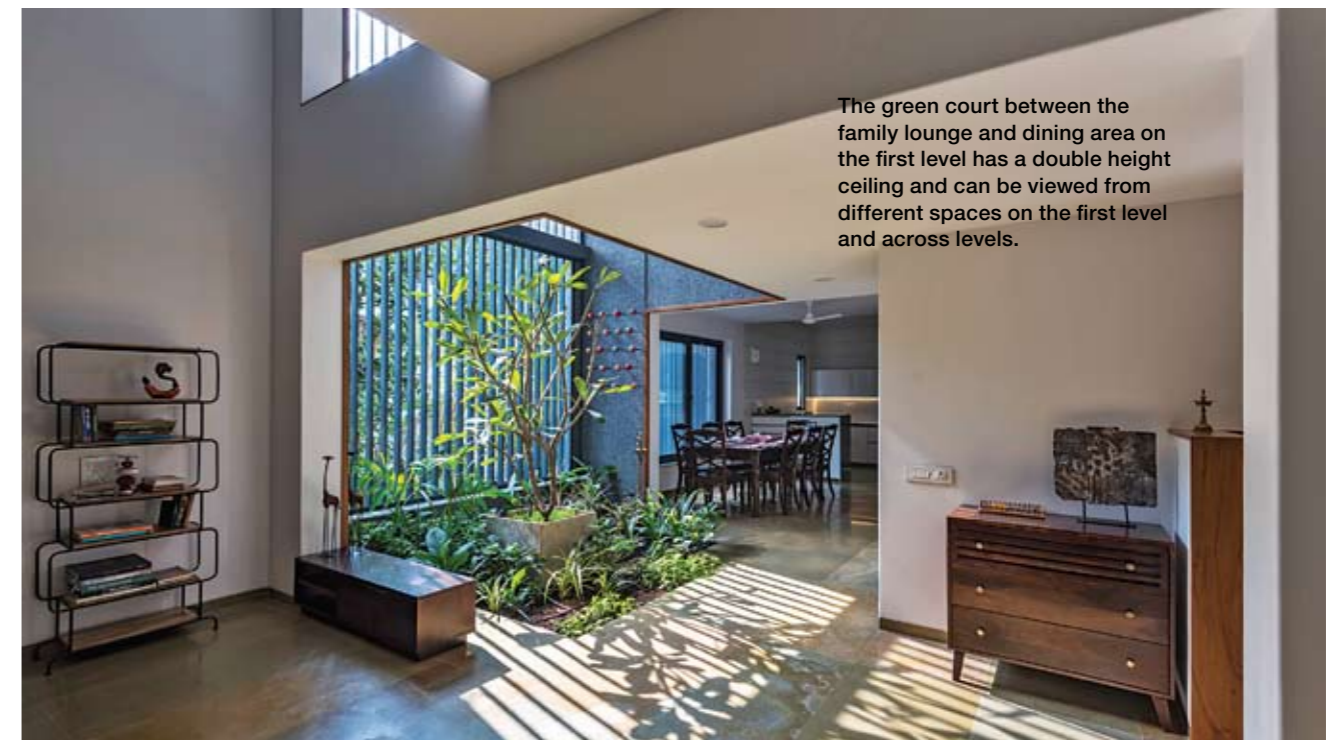
The residence thus has a ground still level for car parking, entry, lift, servant room with toilet, stairwell and a short flight of steps going down to a basement store. The first level has a family lounge, puja room, dining area, kitchen and grandparents' room. The formal living room – that adjoins this level and also has a separate 14' high imposing entrance door – is located a few steps below it thus giving it a distinct space and a double height ceiling. The second level has a family lounge along with the master bedroom with attached terrace and two bedrooms (for the daughter and son); each of the three bedrooms has an attached walk-in wardrobe and toilet.



The basin and toilet on the first level near the common area adjoining the lift.



The home theatre room.



The green court between the family lounge and dining area on the first level has a double height ceiling and can be viewed from different spaces on the first level and across levels.



The raised gardens adjoining the formal living room bring a connect with nature.



Plants in the common area edging the daughter's and son's rooms create a garden-like setting complete with traditional jhoola making it a nice space for them to meet their friends.

The third level has an entertainment area for informal get-togethers, a home theatre room, a multipurpose room, a pantry and a guest bedroom with attached terrace and toilet, while the fourth level has a

lap pool, built-in Jacuzzi, deck area and a cantilevered deck. By this division of spaces, each floor fulfils a purpose, and (though the home is multilevel) on most days the family only needs to access

the first and second levels. The spaces on the third level are usually used only when relatives or friends visit, and the fourth level is used when they wish to relax in the open or have a swim which is



A covered garden, with artificial grass and natural plants adjoins the guest bedroom and multipurpose room on the third level.



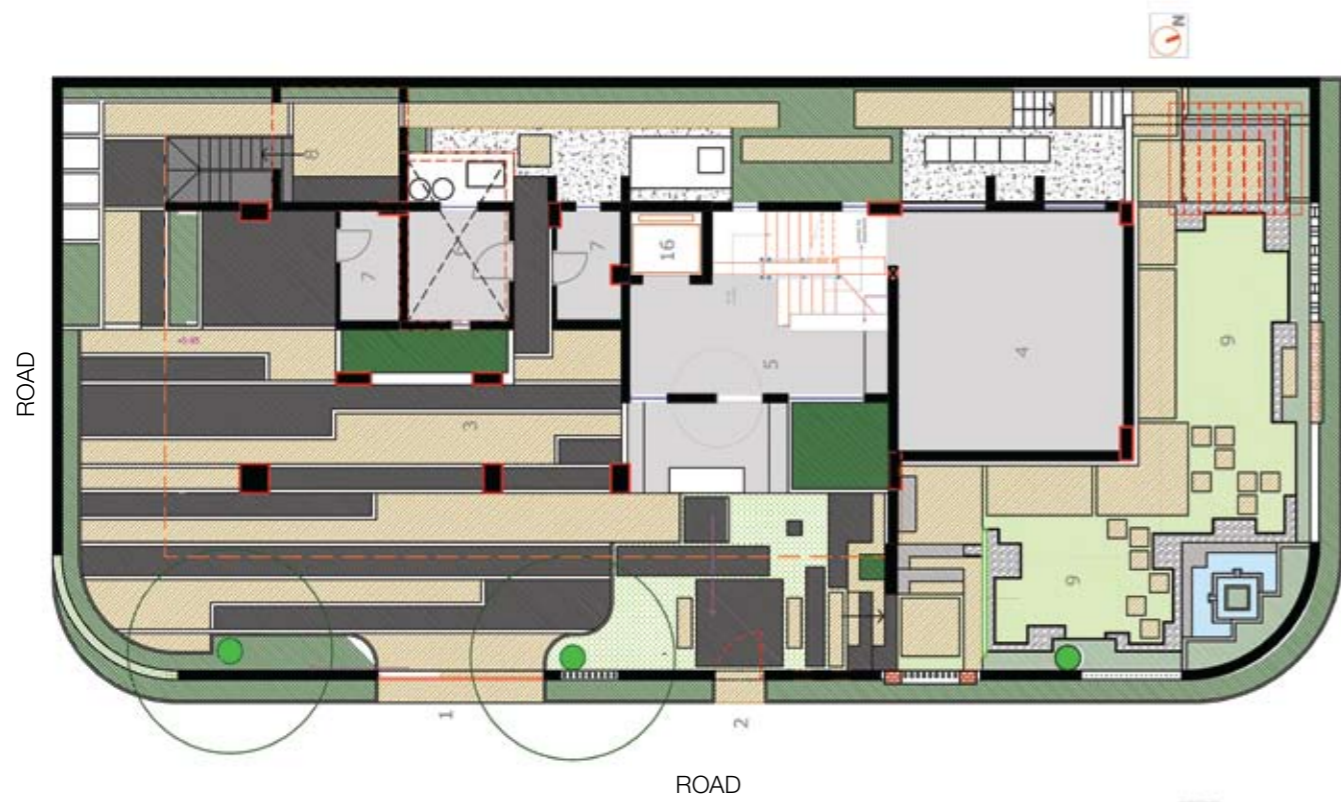
Left and above: The cantilevered deck adjoining the pool on the fourth level.

typically only in the post-monsoon months when the lap pool is filled with water.

Working on the architecture, the architects designed the exterior to convey strength, simplicity and harmony of ele-

ments. This was achieved by rendering the façade in straight lines; restricting the colour palette to red and grey; limiting the materials to brick (with a transparent protective coat), metal grills (painted grey) and

paint (of grey heritage finish); and bringing a play of cut-outs and blank walls, horizontal and vertical lines, patterned brick cladding and grills, flush walls and projecting blocks, open and covered terraces.



ROAD
STILT LEVEL

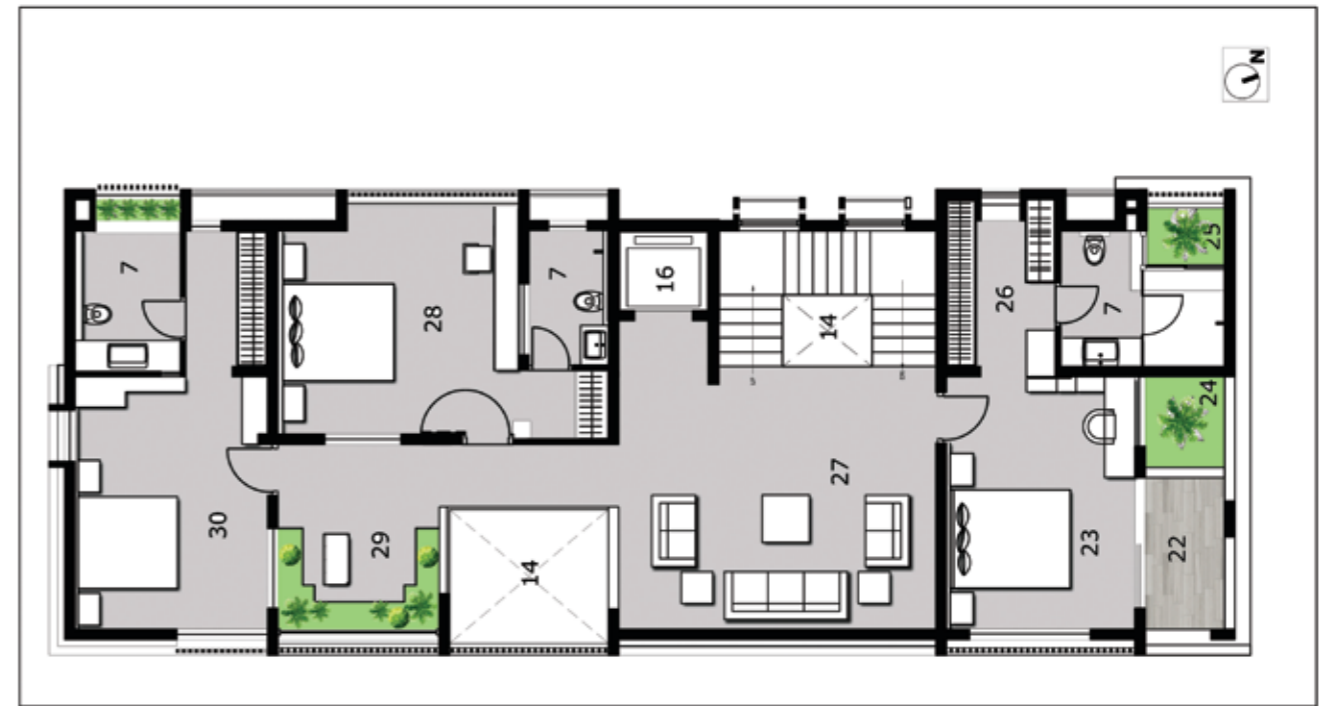


ROAD
FIRST LEVEL

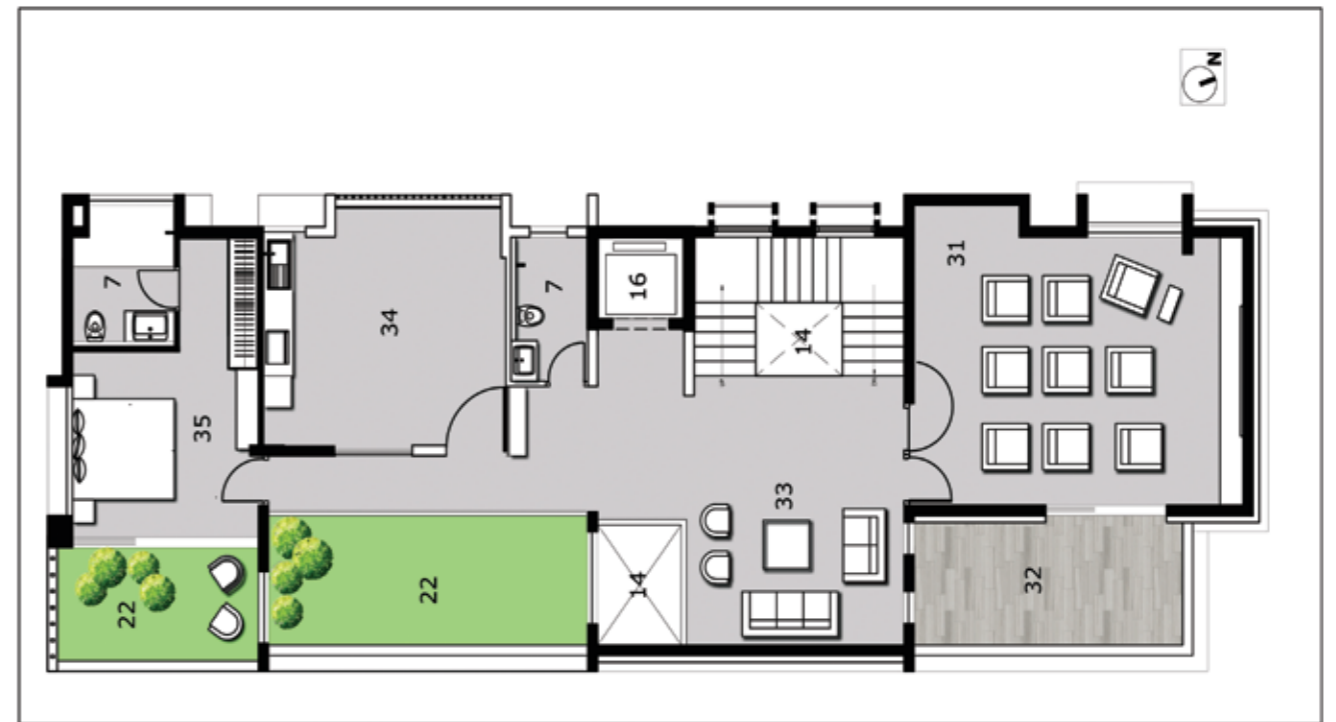
One with the Elements

To bring a connect with natural elements, to create a soothing sight for the senses as well as secondary spaces, and to reduce the

long effect of the home, the architects designed green spaces on different levels. This was achieved by creating two raised gardens with a covered seating as well as a



SECOND LEVEL



THIRD LEVEL

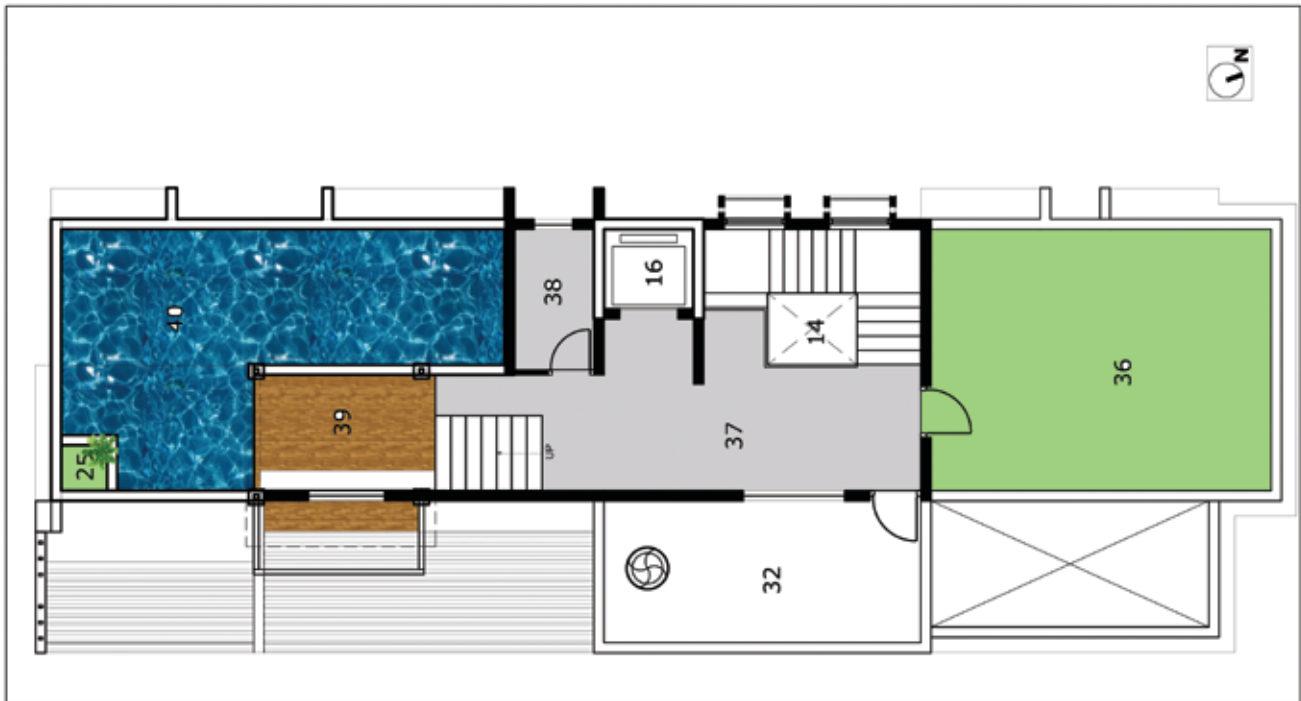
green court edging the formal living room near the first level; a green court set between the dining area and family lounge (on the first level); green courts in the centre, in the master bedroom terrace and

toilet on the second level; a covered artificial grass area in the centre as well as another adjoining the guest bedroom on the third level.

With either no barrier to the greenery or only large glass

panels or louvered windows between inner spaces and the landscaping, the connect with nature is immediate as experienced in different areas of the residence. Large glass panels bring in

bungalows



FOURTH LEVEL (TERRACE)

FACT FILE

Project name

SAPNA Bungalow

Client

Sandeep and Sapna Nahar

Firm name

Sanjeev – Mita Joshi
Architects & Interior Designers

Builtup Area

6000 sq ft

Project type

Bungalow and Interior

Location

Erandvana, Pune

Completed

October, 2018

Contractor & PMC

Sagar Mutha, Tricolour

Furniture Contractor

Shrishti Interiors

RCC Designer

Suhas Joshi & Associates

Landscape

SAMA

views of the raised gardens outside the formal living room while a bench set in the cut-out to the green court offers a spot to enjoy a garden-like space along with fresh breeze and natural light. The green court, with a double height ceiling, set between the dining area and family lounge (on the first level) brings the freshness of plants into the heart of the home as viewed from different spaces on the first level and across levels. This space also allows members to see and speak to each other between floors that the architects feel is paramount for a multilevel bungalow otherwise it becomes like a set of apartments. And the plants in the common area edging the daughter's and son's rooms create a garden-like setting complete with traditional jhoola making it a nice space for them to meet their friends.

Extending the simple and

earthy look of the home the architects stayed away from glass, steel and marble and instead opted for polished Kotah flooring (also complements the grey finish to the exterior), furniture from Jodhpur, ledges for informal seating, local artefacts and a few art installations designed by Sanjeev.

While the grills bring an interesting play of shadows through the days and seasons in the interiors, another element that adds interest is the screen of the overhang of the sitout edging the formal living room: its cut-outs feature the name of the client in a play of different forms! On special occasions they may be surfaced with coloured paper from the inside or coloured lights lit in the sit-out. This creates another attractive element for the residence that makes a statement with its distinctive architecture and interiors.